

The Generator

Issue 508
February 2024



Palmerston Model Engineering Club
www.pnmec.net.nz - pnmec@trains.net.nz

Managers of the Marriner Reserve Railway - Marriner Street - Palmerston North
C/- 119 Ruapehu Drive - Palmerston North 4410

The Palmerston North Model Engineering Club **Upcoming Club Events**

Club Nights typically start at 7.30pm and are usually held at the
Hearing Association Hall, 435 Church Street, Palmerston North.

Thursday 22 February

Visit to Bernard Watson's Museum in Tokomaru.

7.00 pm Start

See details page 2

Thursday 28 March

What I had to do,

Marriner Reserve Railway

Sunday 3 March & Sunday 17 March

Railway operations at the Marriner Reserve

Trains in operation from 1pm to 4pm

Weather permitting (Richard Lockett 06 323 0948)

Thursdays

Railway operations for club members

Subject to ongoing track maintenance and weather

Contact track manager (Richard Lockett 06 323 0948)

Club Notices

February Club Night

Taking advantage of the summer evenings we will journey down to the Horowhenua and visit Bernard Watson in Tokomaru. Bernard has a long history with machinery that we find interesting, more so with the full size than the models, i.e Traction engines, Railcars and NZR history. Meet at the earlier time of 7.00pm on Thursday the 22nd of February at 44 Rata Street in Tokomaru. If you need a ride on the night please contact your usual provider or make contact with a committee member to facilitate a lift down to the Horowhenua and maybe back if you desire.

March Club Night

The planned Mosquito and Merlin club night has been rescheduled for later in the year as the guest speaker will be down in the South Island in March.

What I had to do to find out! Thursday the 28th of March.

Some of the projects we as individuals undertake span many years and involve lots of research to achieve the desired level of detail. The research can take us to places and people not even thought of when we start out on these projects, it's just where the journey takes us, which is half the fun. Come along and revisit your journey undertaken in the pursuit of the detail!

Marriner Reserve Railway

A recent visitor to the Marriner Reserve Railway on a Sunday afternoon was Slade Welch from the Kapiti Miniature Railway with his recently purchased 3.5 inch gauge Britannia. The Britannia is a LBSC design modelled on the Class 7 British Railways Standard Pacific Locomotive. It was pleasing to see a 3.5 inch gauge locomotive running on our track as its been a while, eighteen months or so since the last one. Slade encountered no issue's with our track and the loco seemed to run and steam very well evidenced by the wide smile on Slade's face!



Slade and the Britannia drifting down the curved bank between Compton's Crossing and Levin Bridge. Photo Editor.

January Barbeque

Hosted by the Mudgway family at their Ruakina Farm the usual bunch of suspects assembled for a bring your own barbeque dinner which was cooked not to perfection by your editor! With the meats cooked the conversation flowed which was what was desired, a good social occasion surrounded by items of equipment that those with a mechanical bent find interesting. Owen once again made an item of equipment available for us to have a go on, on this occasion a Freightliner tractor unit! To be more precise a Freightliner Columbia powered by a 430 HP Mercedes Diesel engine which Owen uses to transport heavy machinery around the countryside coupled up to a 3 axle low-loader. Wendy Krippner was very keen to take the Columbia tractor unit for a couple of laps around the paddock and did a very tidy job of it. The Mudgway's have a couple of projects under way at present. Young Alex is doing some mechanical repairs to a large Farmall tractor so as to make it a reliable machine for taking to machinery shows and for working around the property. Owen has taken on a bigger project, the restoration of a Peterbuilt Truck. Peterbuilt's are not that common in New Zealand so Owen is producing a series of U-tube clips detailing his journey with this project. If this is of interest to you check out PeteNZ on U-tube. With darkness descending it was time to head home after a very enjoyable club start to the year! Many thanks to Owen and family for hosting us.

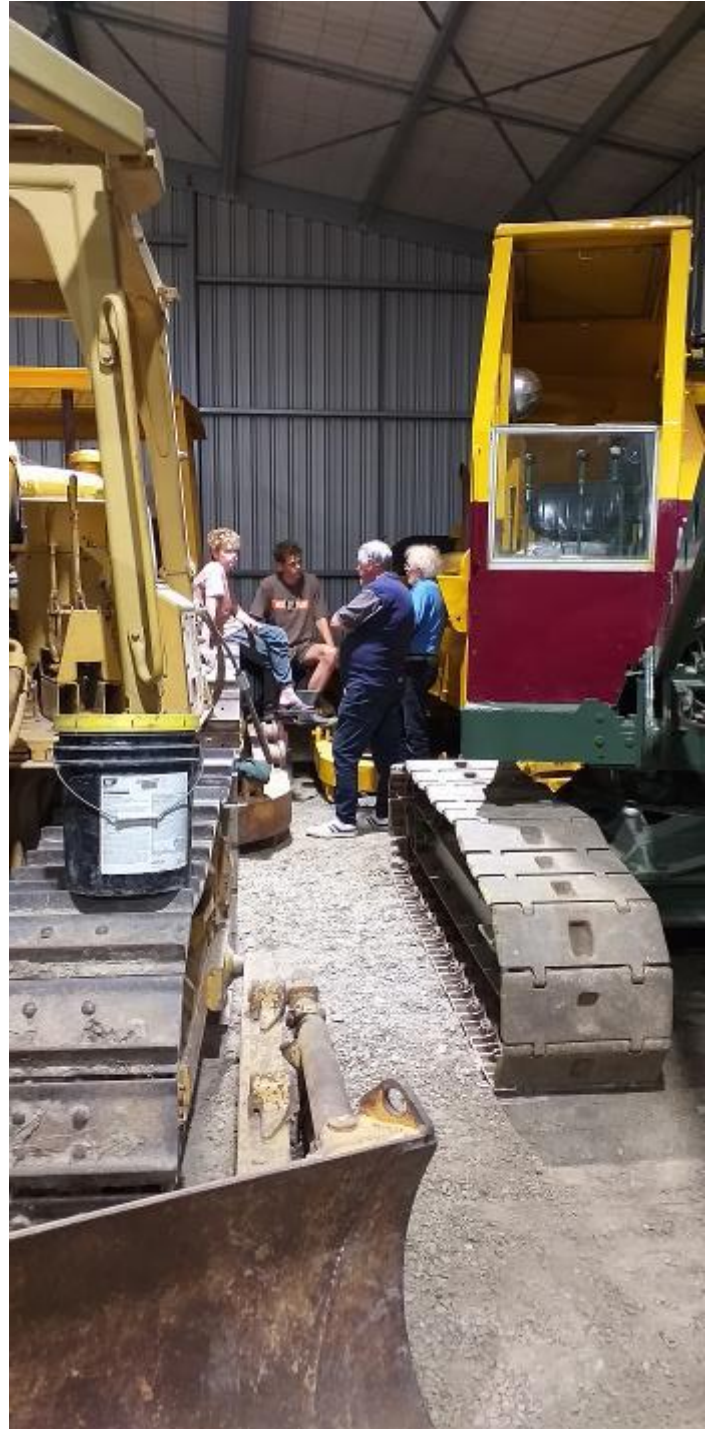
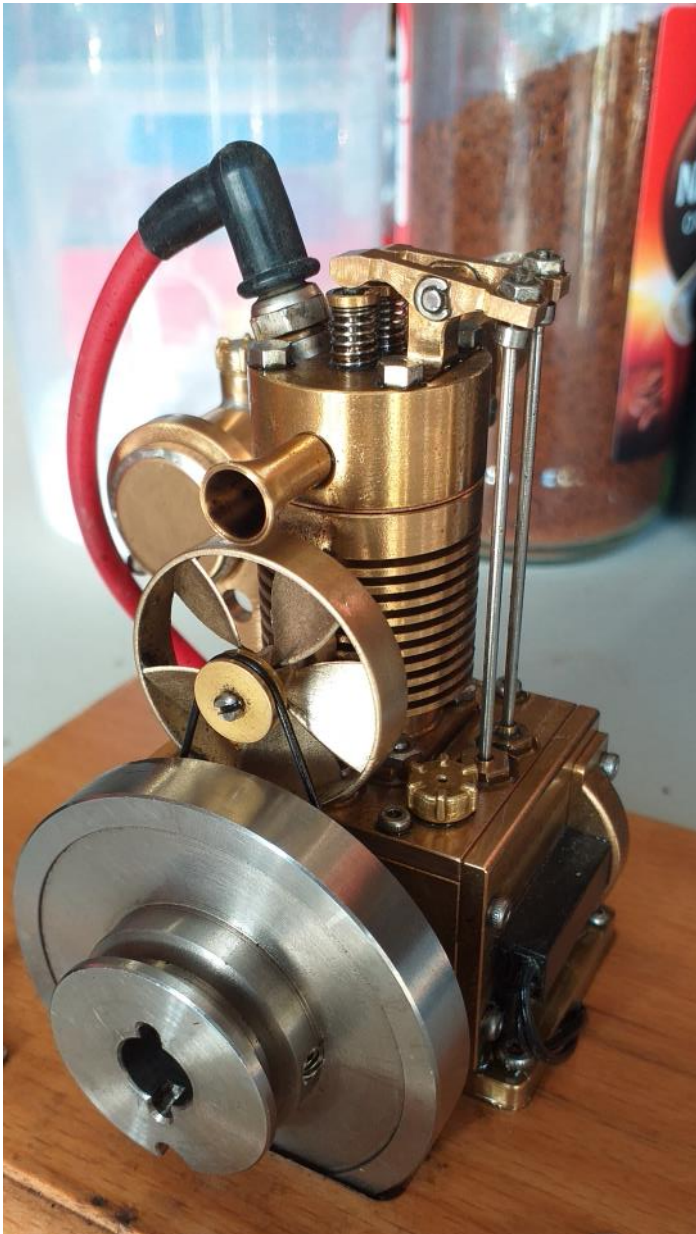


Above Wendy Krippner start your engine! Below The refurbished chassis of PeteNZ



The Generator

Smack talk, a couple of young fella's keen to learn from a lifetime of experience from a couple of old fella's who were having trouble remembering what those experiences were!



Alex showed off a recent present, a kitset I:C engine from a Chinese manufacturer fully machined just requiring assemble. They look the part and run very well. Photo's Editor

Technical Tip

Ever need an extra hand when soldering wires up? Here are 2 methods to help

1/. Use a piece of plastic pipe, roughly 40mm diameter but size can be altered to suit the soldering job.

- Cut a length approx. 30mm
- Cut approx.. 15mm out of the circumference
- Cut a vee in each side of tube gap
- Hold the plastic piece in a vice, vees upwards

The wires to be soldered together can be laid in the Vees so the ends of the wires overlap.

2/. Use a 50mm bulldog clip and grind away the jaws in the middle, as per picture. Don't grind away too much or the jaws will be weakened and may bend. If this happens, simply re bend to form parallel clamping jaws.



Advice and photo Merv George.

Date and Time			Activity
Thursday	22nd February	7.00pm	Tokomaru Visit
Sunday	3rd March	1pm to 4pm	Marriner Reserve Railway
Thursday	7th March	7.30pm	Committee Meeting
Sunday	17th March	1pm to 4pm	Marriner Reserve Railway
Thursday	28th March	7.30pm	Club Night What I had to do
Thursday	4th April	7.30pm	Committee Meeting
Sunday	7th April	1pm to 4pm	Marriner Reserve Railway
Sunday	21st April	1pm to 4 pm	Marriner Reserve Railway
Thursday	25th April	7.30 pm	Club Night AGM

If you would like to be notified when this newsletter is published,
 send us an email with your **Name, Club** and **Email** address to
pnmec@trains.net.nz with **“Generator Please”** in the subject line.